

# Automatically eject RDX drives

with ActiImage Protector Server, SBS, Desktop and Virtual (Windows) software

Get it back 



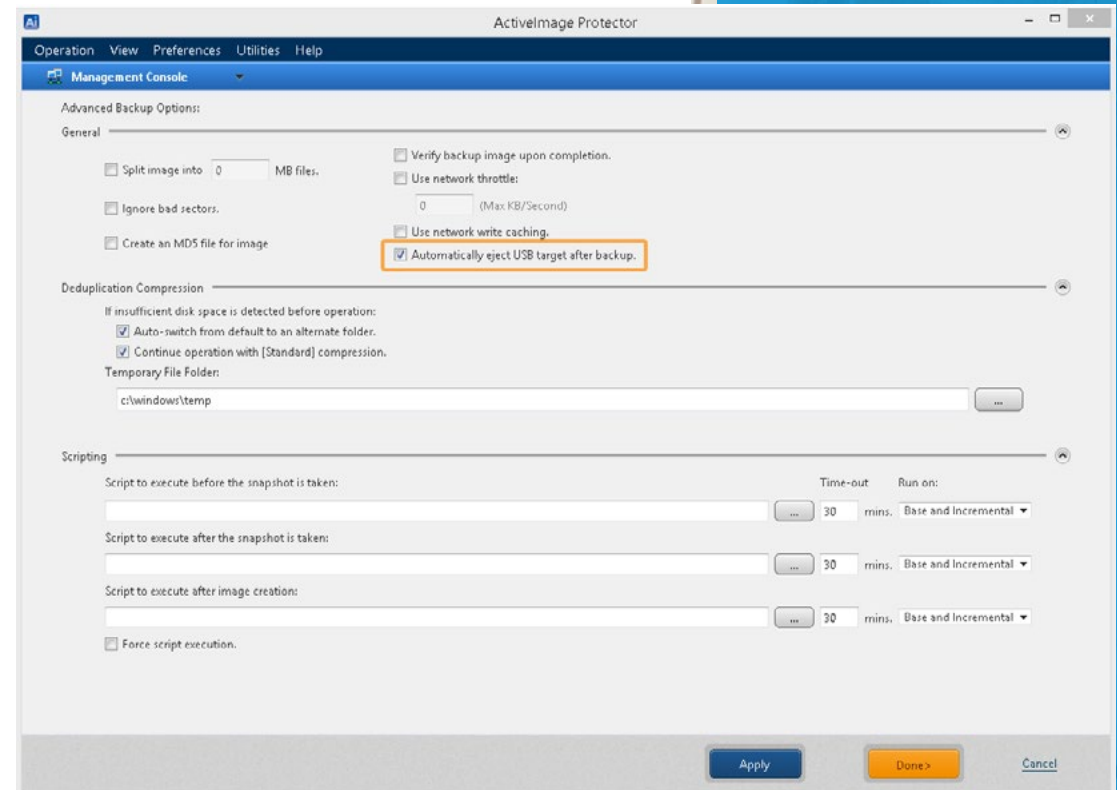
## 14.12.2017

The new built-in option in ActiImage Protector 2018 (Build 5.0.1.4417) is able to differentiate between regular USB hard drives and RDX drives and to deal with ejecting rotating storage devices safely.

When using regular USB hard drives to store your backup files, it is important to remove them safely before plugging a new one. This new build of ActiImage Protector does it for you and safely remove regular USB hard drives in order for the entire devices to be disconnected from the system.

When using RDX technology, you do not want the entire RDX device would be safely removed from the system. Therefore ActiImage Protector 2018 automatically detects the RDX device and only ejects safely the RDX media, instead of removing the entire RDX device from the system.

As per RDX vendor recommendations, the RDX Tools software should always be installed on the machine connected to the RDX for a reliable usage of RDX drives as backup storage.



## Update procedure

- **Download** it directly from the software or download it manually.
- **Install** the update:
  - If you already have ActiImage Protector 2018 installed, install this new build on top and restart the machine
  - If you have ActiImage Protector 2016 or previous version installed, please follow the [upgrade procedure](#).

Join us on [getitback.eu](http://getitback.eu)

Documents / Webcasts / Tutorials

Get it back 